



## **Textile Spinning Machinery Components & Accessories**

YUIL MS Engineering Company





Established in 1984, YUIL MS Corporation has specialized in designing and manufacturing plastic injection molding products for spinning machinery.

We provide our customers with various core and spare parts optimized in auto-doffing system. Our major clients include Rieter Corp., Toyota Corp., Zinser Corp., and we work closely with each customer to insure effective communications and complete satisfaction.

With our effort in producing high quality spares, components and accessories for Textile spinning machinery for more than 30 years, We have established our own technology system and skills to provide best service for customers.

We will keep on leading the way and keep our highest standards. To be a good partner!

## HISTORY

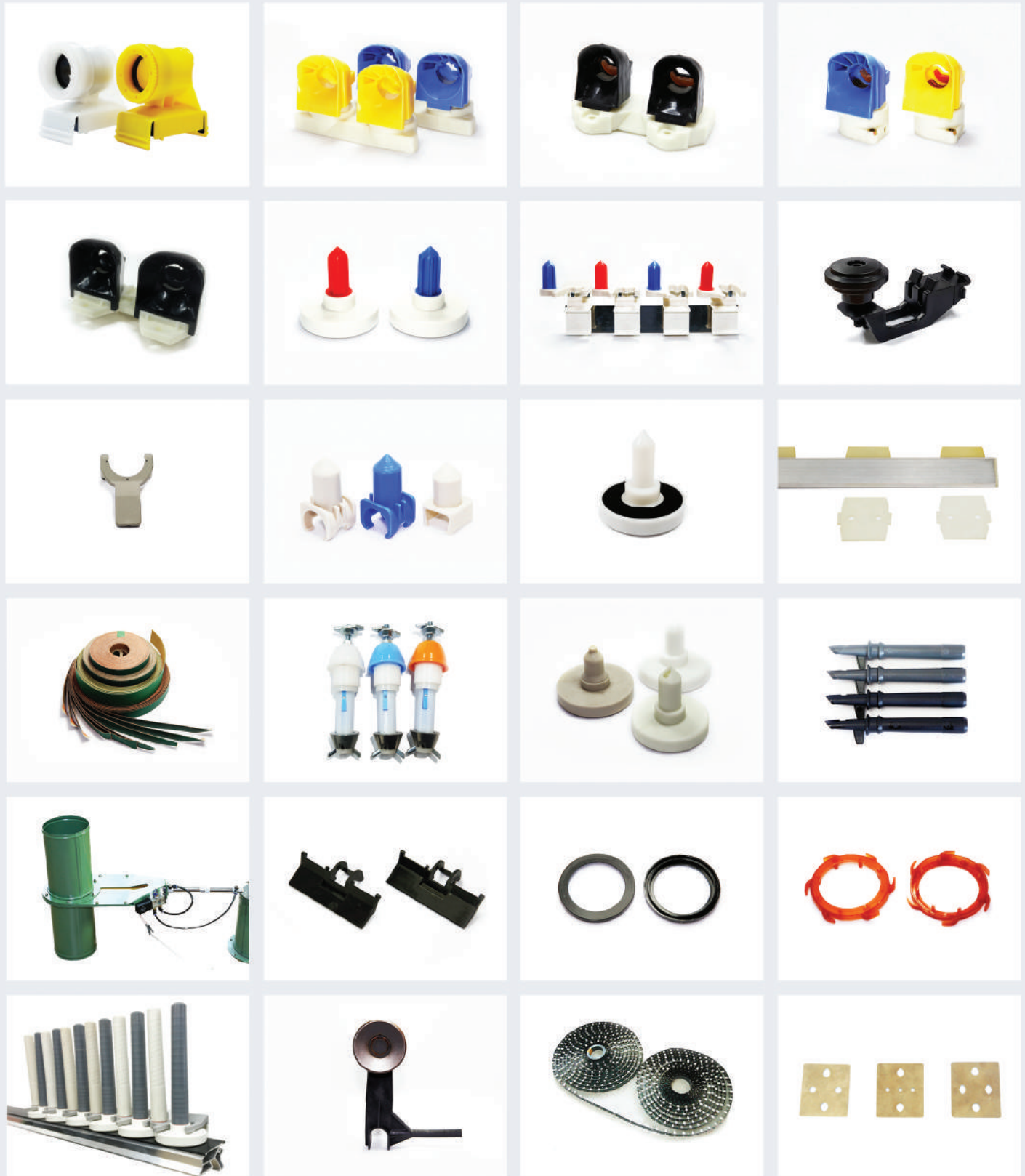
### 1980 ~ 2000

- 1984.06** Founded YUIL MULSAN Co.
- 1987.05** Launched Spindle Tapes for Textile spinning m/c
- 1997.01** Registered patent of gripper for auto-doffing System
- 1997.12** Developed launched Top Cleaner for spinning m/c
- 1998.06** Newly-constructed head office and relocated factory
- 1993.03** designated as clean Workplace by KOSHA

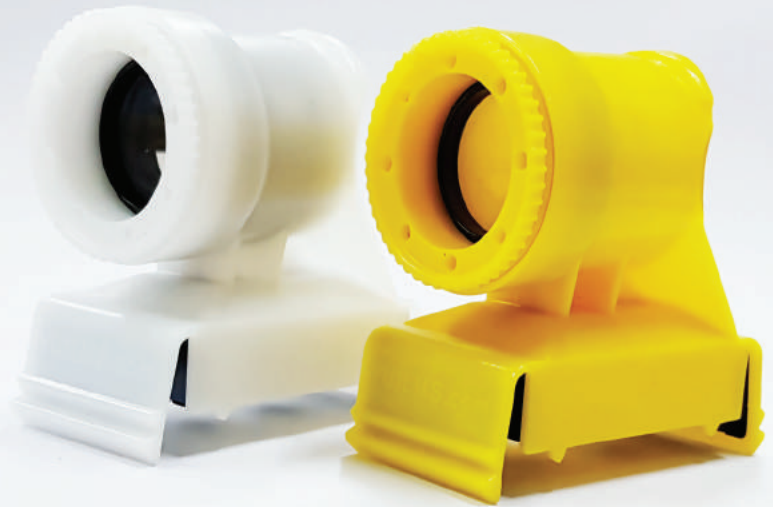
### 2000 ~

- 2001.01** Registered patent of Gripper for spinning m/c
- 2005.10** Participated as an exhibitor at ITMA in Singapore
- 2008.01** Participated as an exhibitor at INTERTEXTILE in Hanoi
- 2010.10** Participated as an exhibitor at INTERTEXTILE in Shanghai
- 2010.11** Awarded "Export Tower" from government
- 2011.06** Incorporated and renames as "YUIL MS Co., Ltd."
- 2011.10** Participated as an exhibitor at INTERTEXTILE in Shanghai
- 2011.11** Awarded "Export Tower" from government
- 2012.03** Relocated to present place for extending business

### Products List



## RIETER Products



### Gripper Assembly for RIETER R/F (ECO Type)

- Part Code : YMS-RG100
- Gauge : 70mm / 75mm    • Application Inch : 6" / 7" / 8" / 9"
- Inner membrane tube is replaceable in the case of air leakage.
- Inner membrane tube is made of Special material for long life.
- Compared to using ordinary black rubber tube, ours doesn't get dirty when gripping the bobbin.

## RIETER Products



**Peg Tray Assy for RIETER R/F**  
- Part Code : YMS-RP100



**New Tray Rail for RIETER R/F**  
- Part Code : YMS-RE600



**Carrier Top for RIETER R/F**  
- Part Code : YMS-RC120



**Carrier Bottom for RIETER R/F**  
- Part Code : YMS-RC130



**Steel Strip for RIETER R/F**  
- Part Code : YMS-RC110



**Peg Tray Assy for RIETER R/F**  
- Part Code : YMS-RC110



**Hand Brake for RIETER R/F**  
- Part Code : YMS-RE504



**Clamping Crown for RIETER R/F**  
- Part Code : YMS-RE501



**CV Guide for RIETER R/F**  
- Part Code : YMS-RE162



**Separator for RIETER R/F**  
- Part Code : YMS-RE502



**Bobbin Holder for RIETER R/F**  
- Part Code : YMS-EE109



**Suction Pipe for RIETER R/F**  
- Part Code : YMS-RE110

## TOYOTA Products



### Gripper Assembly for TOYOTA R/F (RX-240)

• Part Code : YMS-TG200



### Gripper Assembly for TOYOTA R/F (RY-5)

• Part Code : YMS-TG100



**TOYOTA Products**



**Conveyer Belt Assy for TOYOTA R/F**

- Part Code : YMS-TC100



**Diaphragm for TOYOTA R/F**

- Part Code : YMS-CD100



**Suction Flute Assy for TOYOTA R/F**

- Part Code : YMS-TS100



**Peg Tray Brush for TOYOTA R/F**

- Part Code : YMS-TP120



**Peg Tray for TOYOTA R/F**

- Part Code : YMS-TP100



**Bobbin Holder for TOYOTA R/F**

- Part Code : YMS-EE109



**Middle Peg for TOYOTA R/F**

- Part Code : YMS-TM110



**Tension Device Assy for TOYOTA R/F**

- Part Code : YMS-TE120



**New Tray Rail for TOYOTA R/F**

- Part Code : YMS-TE130

### HOWA Products

• Part Code : YMS-HG100



### ZINSER Products

• Part Code : YMS-ZG100



## HOWA / ZINSER Products



**Tension Device Assy for HOWA R/F**

- Part Code : YMS-HE120



**Peg Tray for ZINSER R/F**

- Part Code : YMS-ZP100



**Peg Tray for HOWA R/F**

- Part Code : YMS-HE110



**Bobbin Holder for ZINSER R/F**

- Part Code : YMS-EE109



**Suction Flute Assy for HOWA R/F**

- Part Code : YMS-HS100



**Pallet for HOWA R/F Gripper**

- Part Code : YMS-HG140



**Pad Cleaner Assy for HOWA R/F**

- Part Code : YMS-EP100



**Conveyer Belt Assy for ZINSER R/F**

- Part Code : YMS-ZC100

**LMW Products (Lakshmi)****ORIGINAL****Gripper Assembly for LMW R/F**

- Part Code : YMS-LG100
- Gauge : 70mm / 75mm • Application Inch : 6" / 7" / 8" / 9"
- YUIL MS has developed new type as "Double Type" i.e. 1 Gripper covers 2 spindles.
- Detachable YUIL MS Cap is separable from the body without any break in normal condition and the Cap is reusable.
- Required time to Re-position the separated Cap is less than 3 seconds by anyone.
- Designed to minimize the problem of gauge accuracy

## ETC Products



**Spindle Tape**

- Part Code : YMS-EB110



**Peg Tray for LMW R/F**

- Part Code : YMS-CT100



**Shutter Valve**

- Part Code : YMS-ES100



**Bobbin Holder for LMW R/F**

- Part Code : YMS-EE109



**Clipping Device for RIETER R/F**

- Part Code : YMS-RE140



**Jockey Pulley for RIETER R/F**

- Part Code : YMS-RE505



**Cradle for RIETER R/F**

- Part Code : YMS-RE120



**Gliding Ring for RIETER R/F**

- Part Code : YMS-RE130



**Conveyer Belt Lock for RIETER R/F**

- Part Code : YMS-RC500



## Textile Spinning Machinery Components & Accessories

### **Manufacturer & Exporter**

- Address : 83, 809 Beon-gil, Bucheon-si, Gyeonggi-do, KOREA (14665)
- TEL : +82-2-2686-8822 / +82-10-3131-2507
- Fax : +82-2-2681-3006
- E-mail : Trade@yuilms.com
- Web : <http://www.yuilms.com>