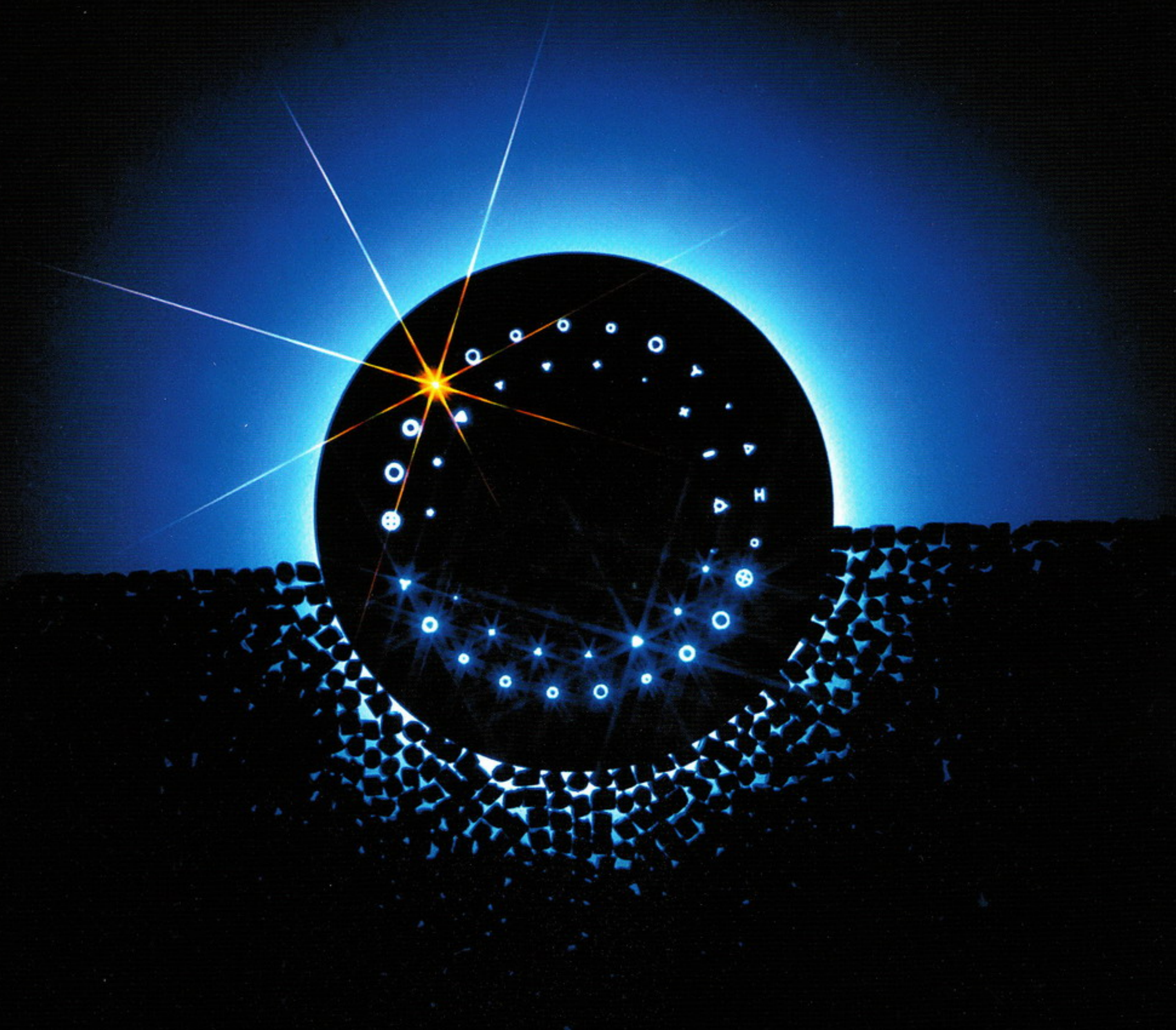




SOSSNA SPINNERETS®



Sossna GmbH
Elbestrasse 10
45768 Marl, Germany

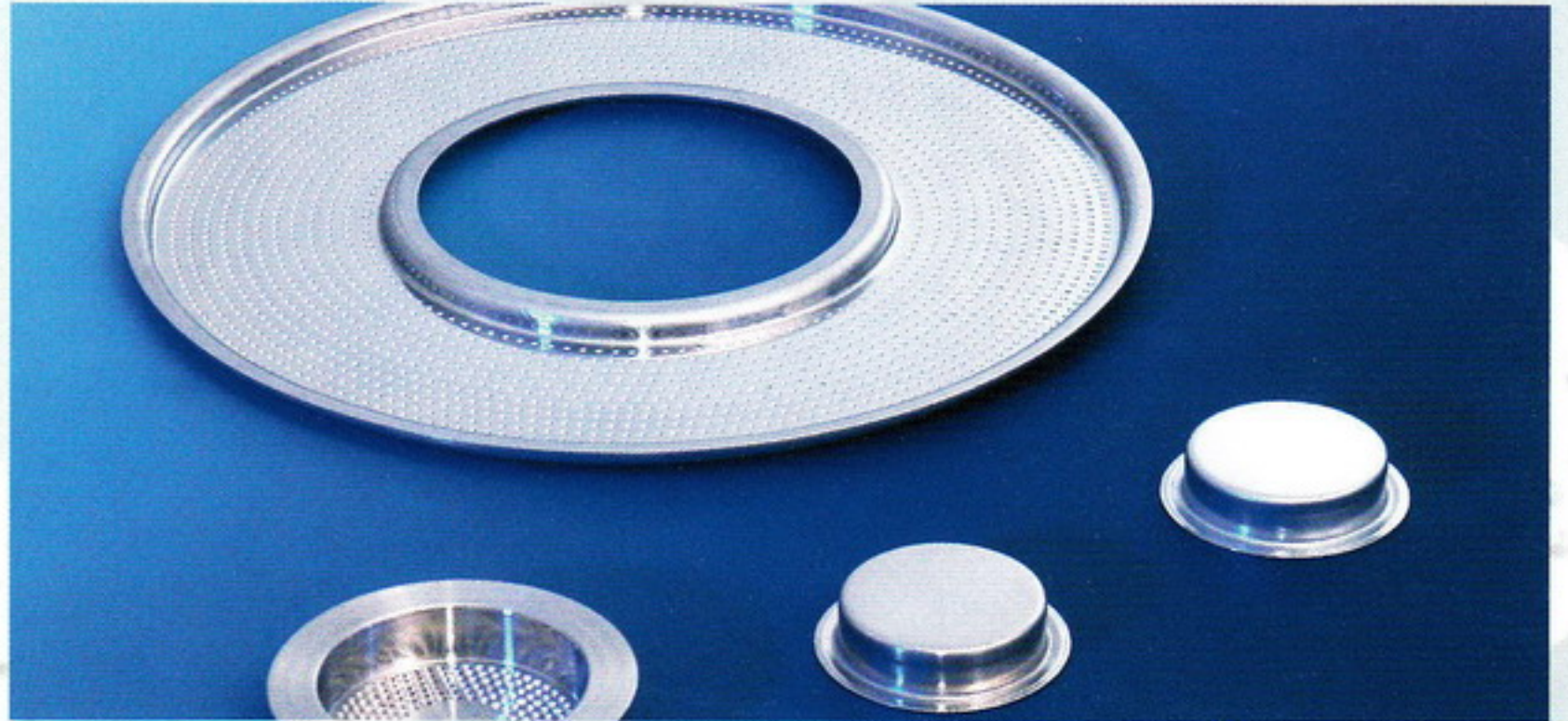
Phone: +49.2365.5175 - 0
Fax : +49.2365.5175-20
Internet: www.sossna.de
eMail: sossna@sossna.de

Assortment of Spinnerets

for Melt Spinning



for Dry Spinning



Set for bi-component spinning



Spin Packs



Spinnerets for Melt Spinning

Typical Specification

Surface roughness of hole:	- countersink	N5 – N7
	- counter bore	N3 – N6
	- transition angle	N2 – N6
	- capillary	N1 – N3
Surface roughness of exit side	- mirror finish by buffing	N1
	- mat finish by lapping	N2 – N4

Typical material

AISI	304	316	316 L	317 L	321	431	630
DIN	1.4301	1.4401	1.4404	1.4435	1.4541	1.4057	1.4542
JIS	SUS 304	SUS 316	SUS 316 L	SUS 317 L	SUS 321	SUS 431	SUS 630

Other material available on request.

Tolerance of capillary

Round hole spinnerets:

Diameter of Capillary D	Length of Capillary L/D	Tolerance of D		Tolerance of L	
		Special	Precision	Special	Precision
0,04 – 0,10	≤ 1,00	± 0,001	± 0,002	± 0,01	± 0,02
0,11 – 0,20	≤ 3,00	± 0,001	± 0,002	± 0,01	± 0,02
0,21 – 0,50	≤ 5,00	± 0,001	± 0,002	± 0,01	± 0,02
0,51 – 1,00	≤ 8,00	± 0,002	± 0,004	± 0,02	± 0,04

Profiled hole spinnerets:

Width of Slit W	Length of Capillary L	Tolerance of W		Tolerance of L		All other capillary tolerances	
		Special	Precision	Special	Precision	Special	Precision
0,04 - 0,06	≤ 5,0 w	± 0,002	± 0,003	± 0,02	± 0,03	± 0,015	± 0,025
0,06 - 0,10	≤ 10,0 w	± 0,002	± 0,003	± 0,02	± 0,03	± 0,015	± 0,025
0,10 - 0,20	≤ 20,0 w	± 0,002	± 0,003	± 0,02	± 0,03	± 0,015	± 0,025
≤ 0,20	≤ 30,0 w	± 0,002	± 0,003	± 0,02	± 0,03	± 0,015	± 0,025

Spinnerets for Non-Woven and Jet strap for Spun Laced

Spinnerets for non-woven and jet straps for spun laced fabrics can be manufactured and supplied according to customer's specification and drawing.

Typical Specifications for:

Spinnerets for non-woven

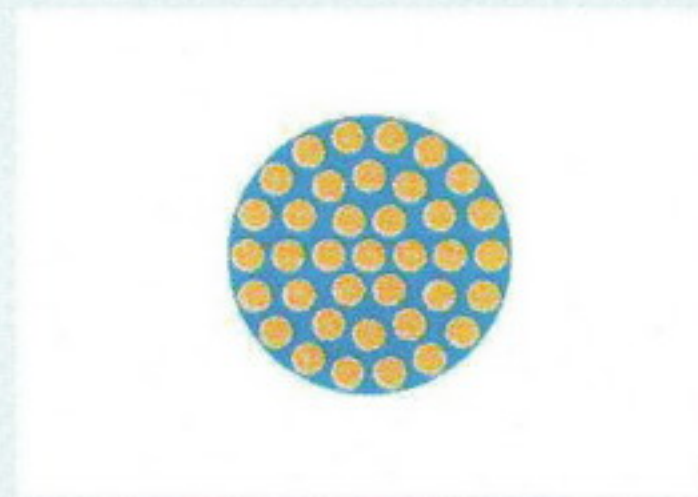
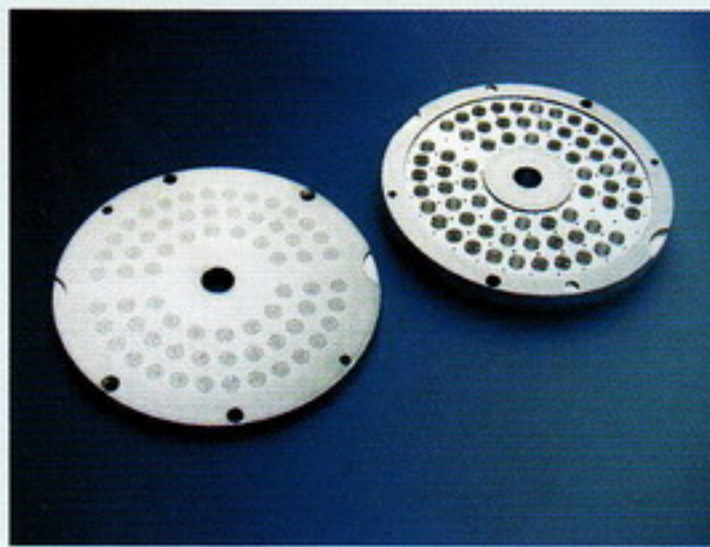
Max. length:	5600
Diameter of capillary:	≥ 0.1
Ratio L/D of capillary:	≤ 10
Roughness of capillary:	$\leq Ra 0.2$

Jet straps for spun laced fabric

Length:	max. 5600
Nos. of rows:	1; 2 or 3
Nos. of holes:	On your request
Type of holes:	cone or hyperboloid
Diameter of capillary:	≥ 0.05
Ratio L/D of capillary:	On your request

Spinnerets for bi-component spinning

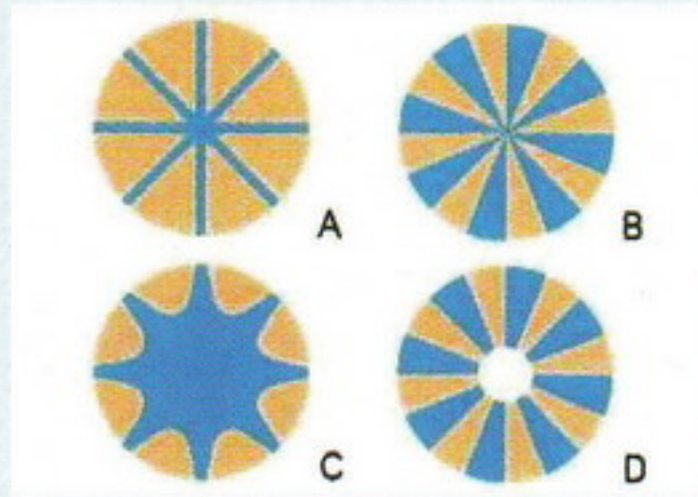
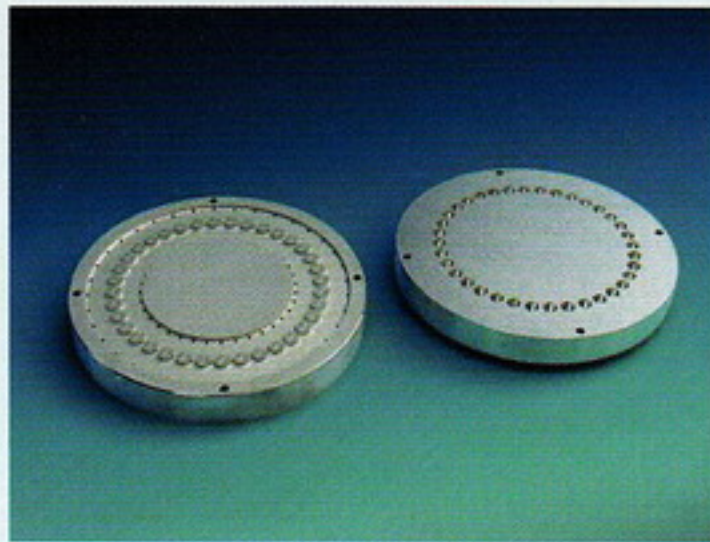
sea-island type



Distributor construction type:
1. Insertion type
2. Engraved type

Production range:
No. of holes: subject to customer's request 24, 36, 48, 66, 72, etc.
No. of island: subject to customer's request 16, 24, 37, 48, 127, 217 or more.

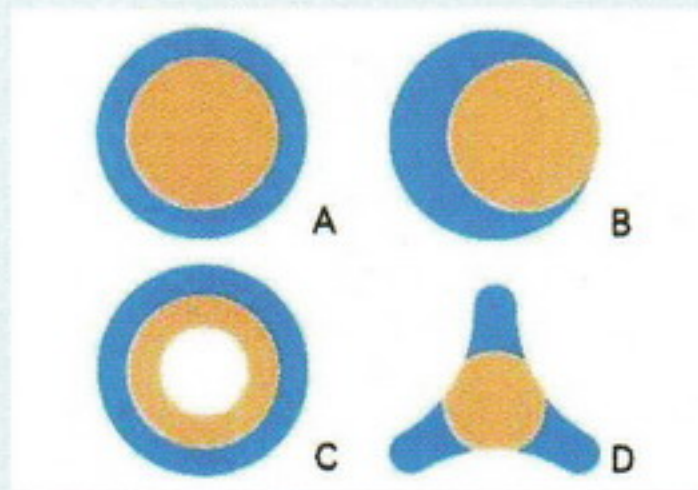
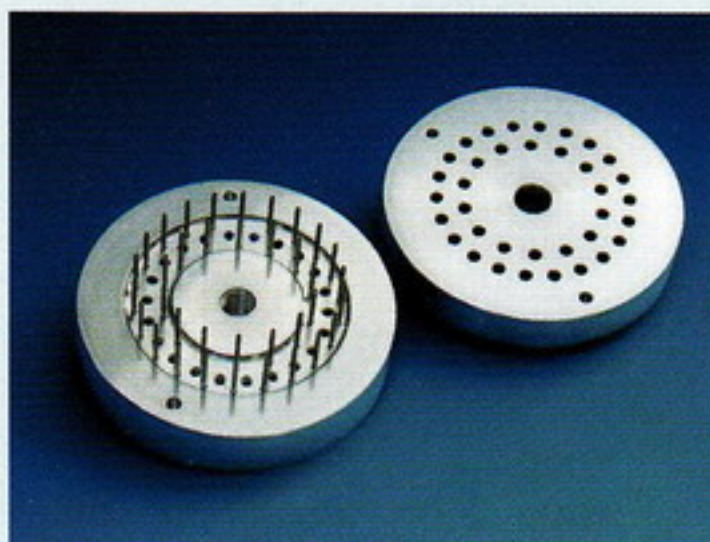
split spinning



Distributor construction type:
1. Insertion type
2. Engraved type

Shape of cross section:
A) Octalobal type
B) Orange type
C) Gear type
D) Hollow orange type

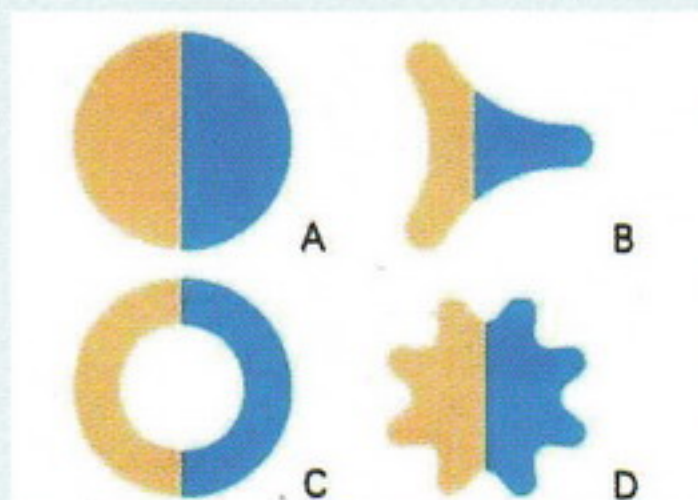
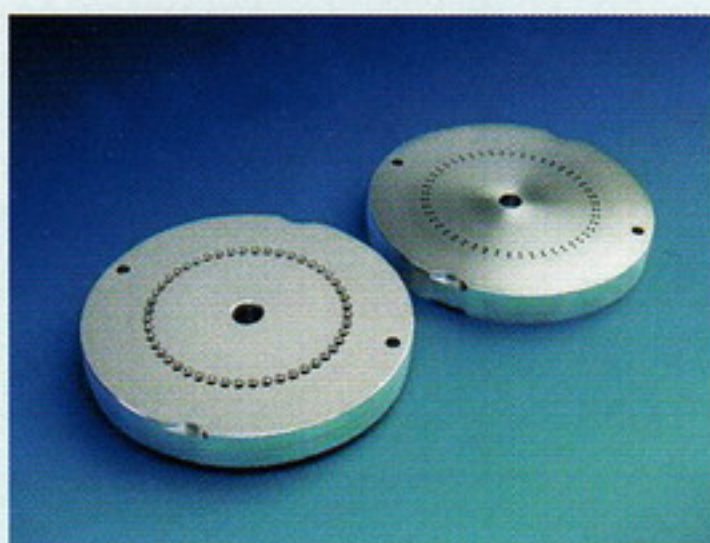
sheath-core type



Distributor construction type:
1. Insertion type
2. Engraved type

Shape of cross section:
A) Sheath-core concentric type
B) Sheath-core eccentric type
C) Sheath-core hollow type
D) Sheath-core trilobal type

side-by-sidetype (S/S)



Shape of cross section:
A) S/S round type
B) S/S trilobal type
C) S/S hollow type
D) S/S gear type